



DECORATIVE

Floor and Wall Protective Coating Systems

Residential

Commercial

Institutional

Industrial





Product Selection Chart

Applications	Decorative								Top Coats		Industrial						Support			
	Crown Quartz	Crown Shield	Crown Shield SL	Crown Shield 3D SL	Crown Spatter	Crown Thin-Set Epoxy Terrazzo	Crown Image (9" wide)	Crown Flake, Chips, Hybrid & Brindle	Crown Clear	Crown Pro	CrownPro Acid Shield	CrownPro Solvent Shield	CrownPro EPC Temp Shield	CrownPro Spark Shield	CrownPro Wear 20 EPC-LTC	Crown Crete	Crown Cote Vapor Barrier	Crown Flex Membrane	Crown Flex Joint Sealer	Crown Cove
Animal Kennels	•	•	•		•	•	•	•	•	•					•	•	•	•	•	
Auto Showrooms	•				•	•	•	•	•	•			•			•			•	•
Automobile Service Areas	•	•	•		•		•	•	•	•						•			•	•
Churches	•	•	•		•	•	•	•	•	•						•	•	•	•	•
Clean Rooms	•	•	•		•		•	•	•	•			•		•	•	•	•	•	•
Concrete or Wood Floors	•	•	•	•	•	•	•	•	•	•	•	•	•	•	•	•	•	•	•	•
Correctional Facilities	•	•	•		•		•	•	•	•	•	•	•	•	•	•	•	•	•	•
Food Processing Plants	•	•	•		•	•	•	•	•	•				•	•	•	•	•	•	•
Food Service Areas	•	•	•	•	•	•	•	•	•	•			•		•	•	•	•	•	•
Galleries	•	•	•	•	•	•	•	•	•	•			•			•	•	•	•	•
Health Care Facilities	•	•	•		•	•	•	•	•	•			•	•		•	•	•	•	•
Heavy Traffic Areas	•	•	•		•	•	•	•	•	•	•	•	•	•	•	•	•	•	•	•
High Rise Building Floors	•	•	•	•	•	•	•	•	•	•			•			•	•	•	•	•
Hospitals	•	•	•		•	•	•	•	•	•			•	•	•		•	•	•	•
Hotels	•	•	•	•	•	•	•	•	•	•			•		•	•	•	•	•	•
Interior Entrances	•	•	•		•	•	•	•	•	•			•		•	•	•	•	•	•
Interior or Exterior	•	•	•	•	•	•	•	•	•	•	•	•	•	•	•	•	•	•	•	•
Laboratories	•	•	•		•		•	•	•	•	•	•	•	•	•	•	•	•	•	•
Lobbies	•	•	•	•	•	•	•	•	•	•			•			•	•	•	•	•
Locker Rooms	•	•	•		•		•	•	•	•					•	•	•	•	•	•
Manufacturing Plants	•	•	•		•		•	•	•	•	•	•	•	•	•	•	•	•	•	•
Mechanical Rooms		•	•							•	•				•	•	•	•	•	•
Multi-Purpose Rooms	•	•	•		•	•	•	•	•	•			•		•	•	•	•	•	•
Museums	•	•	•	•	•	•	•	•	•	•			•			•	•	•	•	•
Offices	•	•	•		•		•	•	•	•			•			•	•	•	•	•
Packaging Rooms	•	•	•		•		•	•	•	•			•		•	•	•	•	•	•
Patios	•			•	•		•	•	•	•						•	•	•	•	•
Pedestrian Traffic Areas	•	•	•	•	•	•	•	•	•	•			•		•	•	•	•	•	•
Pharmaceutical Plants	•	•	•		•		•	•	•	•			•		•	•	•	•	•	•
Precast Concrete Balconies	•	•			•		•	•	•	•						•	•	•	•	•
Pretreatment of Floors																•	•	•		
Production Rooms	•	•	•		•		•	•	•	•	•	•	•	•	•	•	•	•	•	•
Restaurants	•	•	•	•	•	•	•	•	•	•			•		•	•	•	•	•	•
Restrooms	•	•	•			•		•	•	•						•	•	•	•	•
Retail Stores and Showrooms	•	•	•	•	•	•	•	•	•	•			•		•	•	•	•	•	•
Seamless/Sanitary Counter Surfaces	•				•		•	•	•	•			•	•			•			•
Shower Areas	•							•	•	•						•	•	•	•	•
Sidewalks	•	•			•			•	•	•					•	•	•	•	•	•
Slab-On-Grade Concrete Floors	•	•	•	•	•	•	•	•	•	•	•	•	•	•	•	•	•	•	•	•
Vehicular Traffic Areas	•	•	•		•		•	•	•	•	•	•	•	•	•	•	•	•	•	•
Wall Surfaces	•						•	•	•	•	•	•	•	•			•	•	•	•
Water Treatment Plants	•	•			•		•	•	•	•	•	•	•	•	•	•	•	•	•	•

For More Information, Call Today! **847-382-3567**

CrownCove Fast & Economical

CrownQuartz™

A Popular Decorative Floor

Recommended Use: Well-suited for virtually any environment including retail, commercial, food processing, institutional, pharmaceutical, residential, pool decks, zoos, and aquatic areas above and below the water line, as well as animal care facilities. Wet floor surfaces do not change the attractive encapsulated colors.

System Description: Pigmented colored quartz aggregate is used with an epoxy base coat and top coated with UV stable polyurea to create a decorative and durable flooring systems. CrownQuartz is useable on interior and exterior concrete applications. Fast cure systems are useable in 24 hours. Non-porous surface provides excellent chemical and water resistance. Complies with OSHA and ADA safety surface profile standards.



CrownShield® SL

Product 315

A Crown Polymers Exclusive!

Recommended Use: Ideal for light to heavy-duty commercial or industrial concrete surfaces requiring releveling or a thicker overlayment.

System Description: Self-leveling 1/8" or 3/16" epoxy polymer concrete overlay that becomes a monolithic part of the concrete. A dense aggregate filled overlay with high physical strength properties designed for interior or exterior use. The finished appearance when left as a smooth surface has a highly reflective gloss, or a reduced gloss when textured. Add color flakes, colored quartz and a clear top coat to change from a tough industrial surface to a highly decorative finish.

CrownShield® 50, 40, 28 & 40-2

Products 320, 321, 322, 323

Recommended Use: Used in decorative residential, commercial and institutional applications and heavy-duty industrial and manufacturing applications.

System Description: A family of high build pigmented epoxy polymers designed for a variety of environmental exposures. Curable on substrate temperatures from 28°F - 110°F (-2°C - 43°C), speed of cure from 2-12 hours per coat. Applied as thin coatings or thick epoxy polymer concrete overlays. The finished floor appearance can be a solid color, random flaked or beautiful patterns of distinctive colors and shapes that enhance the surrounding décor.

CrownShield® 3-D SL

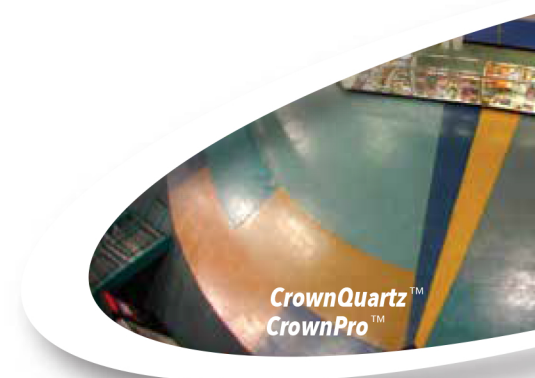
Product 316

A Three-Dimensional Experience

Recommended Use: Ideal for dramatic applications such as hair salons, night clubs or where an ultra dramatic effect is desired such as counter tops. Beautiful in homes or around pool decks and patios.

System Description: A Crown Polymers exclusive. A 100% solids, near odor free, air releasing, non-shrink, self-leveling polymer overlay. Creates a unique 3-D visual effect, with sparkling multi-color glitter, and variety of proprietary visual components. Smooth or textured surfaces. Easy to clean and maintain.

**"Walk & drive all over us...
We're tough, we can take it!"**



Create Imaginative Custom Designs

CrownSpatter™ Product 312 & 313

A New Kind of Epoxy Polymer Floor

Recommended Use: Perfect for applications where a one-of-a-kind design is desirable. Ideal for increasing the creative possibilities for interior designers and discerning customers. For concrete, wood or steel floors such as those found in retail stores, showrooms, commercial kitchens, food processing, restaurants, grocery and large stores, where beautiful and durable floor surfaces are desirable.

System Description: A Crown Polymers . exclusive. A spray-on floor that offers seamless, monolithic bond to the concrete. CrownSpatter offers hundreds, if not thousands, of colors in an infinite number of marbled, mottled, or speckled patterns. This unique polymer overlay consists of an epoxy base coat and a polyurea or epoxy color coat and top coat. Polyurea is selected when UV protection is required. Both systems provide excellent abrasion resistance, wearability, and are easy to maintain. They are both ready for use in 48 to 72 hours depending on the system selected. Safety walking surfaces exceed OSHA and ADA slip resistant requirements. Truly, a premium floor at an affordable price.

Crown Thin-Set Epoxy Terazzo™ Product 370

Beauty and Durability Remain Constant.

Recommended Use: Floors requiring additional thickness for large volumes of pedestrian traffic.

System Description: 100% Solids, Epoxy Polymer Concrete incorporates decorative aggregate for 1/4" to 3/8" thin set, jointless or jointed pattern floors. Can include placement of graphic elements including patterns, logos, borders and other decorative elements.

CrownImage™ Product 308 & 309

Unique Three-Dimensional Appearance

Recommended Use: For applying corporate trademarks, logos, illustrations, product branding, safety signs and directions and other graphic images to floors in environments such as lobbies, showrooms, factories, hallways and corporate offices. For interior and outdoor applications.

System Description: The system is a composite of a printed fabric that is applied to an epoxy overlay. The fabric is bonded to the overlay with UV stable polyurea. The finished composite is then textured to meet OSHA and ADA slip resistant standards. The overlay creates a three-dimensional appearance. The inlaid images are so realistic that people often try to pick them up.

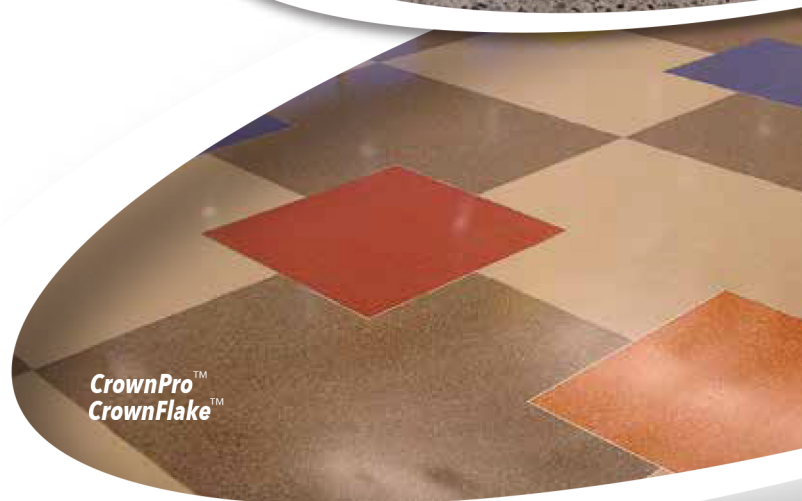
CrownFlake™, CrownChips™, CrownHybrid™, CrownBrindle™

Create Those Special Atmospheres

Recommended Use: For concrete or wood floors such as those found in showrooms, garages, residential, retail stores, locker rooms, restaurants, hospitals and balconies, where a beautiful, durable, seamless surface is desirable on interior or outdoor uses.

System Description: The uniqueness of each of these polymer overlays is the size and shape of the vinyl flakes within each system. They are available in 4 distinct mixtures, each with a different look designed to create a special mood within any environment. Standard and custom solid colors and blends are available. Flakes are encapsulated into an epoxy base coat such as CrownShield for superior adhesion. Top coat options include epoxy, polyurethane or polyurea. Durable safety walking surfaces exceed OSHA and ADA slip resistant requirements.

Learn What's New
www.agschicago.com



For More Information, Call Today!

847-382-3567

Create Decorative Floors with Endless Variety & Unlimited Possibilities

Long-Lasting Systems Built For Traffic!

CrownClear™

Product 326

Durable and Odorless!

Product Description: A unique two-component odorless epoxy clear coat formula, low viscosity, 100% solids. No. 326 provides the best UV resistant protection in the epoxy family.

CrownPro™ 6,10

Products 333, 334

UV Stable

Product Description: Two easy to apply polyurea formulas that are "Green", 100% solids, zero VOC's, low viscosity, clear or pigmented with nearly no odor during application. Best for interior or exterior use where UV resistance is required.

CrownPro™ AcidShield

Product 350

Superior Acid Protection

Recommended Use: For environments where acid spills occur and acid resistance is desirable.

System Description: Two component, 100% solids, low odor, novolac epoxy coating or epoxy polymer concrete.

CrownPro™ SolventShield

Product 351

A High-Tech Protector

Recommended Use: For environments where solvent spills occur and solvent resistance is desirable.

System Description: Two component Novolac aliphatic epoxy formula is a 100% solids, low odor, can be used as a neat coat, broadcasted system or a epoxy polymer concrete system that becomes a monolithic part of the concrete.



A Top Coat For Every Application



CrownPro™ SparkShield & CrownLiquidCopper™

CrownPro™ SparkShield & CrownLiquidCopper™ Primer
Product 352, 353
Reliable ESD Protection

Recommended Use: For floor environments where the danger of static electricity is possible.

System Description: When dependable ESD protection is needed, CrownPro SparkShield, self-leveling, 2mm thick, static dissipating floor system, complies with NFPA Static Electricity Dissipative Standards.

CrownPro™ TempShield
Product 356
Protects Up To 450°F (232°C)

Recommended Use: Protects concrete and tile substrates from dry, hot, or liquid environments and highly resistant to thermal changes. Use where industrial protection is needed on floors, drains and containment areas.

System Description: CrownPro EPC TempShield is an epoxy polymer concrete, 100% solids, non-shrink, low odor during applications that becomes a monolithic part of the clean concrete. It may be troweled on flat, graded or vertical surfaces.

CrownWear™ 20 LTC
Product 202
Low Temp Cure Down To 20°F (-7°C)

Recommended Use: For freezers, cold storage or outdoor environments.

System Description: Two component, 100% solids, epoxy polymer concrete. Use for patching and complete overlayment on cold surface applications. Applied by broadcast, power or hand troweled methods.

CrownCrete™
Products 805
Industrial or Industrial Decorative

Recommended Use: Ideal for use indoor or outdoor concrete surfaces where a thicker 1/8" to 3/8" overlay is desirable. Decorative applications of CrownCrete are typically used on retail, commercial, restaurant, kitchen, grocery, shopping mall, sidewalk, driveway, and concrete surfaces that need repair and good abrasive resistance. Also protects new concrete surfaces.

System Description: CrownCrete™ E is a modified Novolac epoxy polymer concrete that adheres to rough or smooth concrete surfaces, providing a smooth and safe walking or driving surface. It is resistant to thermal shock from hot spillages, steam cleaning and power floor scrubbing equipment. Ask your Crown Polymers representative for ideas on how to make your floor more decorative and raise the value of your property.



An Overlay For Every Application

CrownShield®

High Performance Decorative & Durable
Solid Color Floor Overlays

For More Information, Call Today!

847-382-3567

Vapor and Moisture Protection

CrownCote™ Vapor Barrier

Product 303

Stop Vapor Transmission

Recommended Use: To stop vapor transmission through concrete floors when overlaid with hardwood floors, tile, carpet and Crown Polymers overlays.

Product Description: Ultra low viscosity, modified 100% solids, non-solvent epoxy. Penetrates into the concrete, seals off, and prevents vapor transmission to the surface.



CrownCote™ Vapor Barrier



CrownCove™
CrownClear™

CrownFlex™ Membrane

Product 304

Extra Moisture and Vibration Protection

Recommended Use: Use for an additional shield from vibrations and waterproofing as a neat material under the polymer overlay wear surface when condensation, dew, or free moisture within the concrete or wood substrate could be present. Typical applications are mechanical rooms, parking decks, ramps and balconies.

Product Description: Two component, low modulus, 100% solids, epoxy that adheres to the substrate surface.

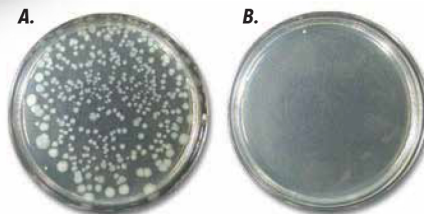
CrownCove™

Product 701, 704 & 706

Fast Around Corners & Straightaways

Recommended Use: A polymer precast floor-to-wall cove system is used for commercial, retail, institutional, and industrial applications with selected floor polymer or cementitious overlays. Its seamless design stops water, chemicals, insects, bacteria, debris, dirt and floor cleaning solutions from puddling or seeping into the floor-to-wall juncture. Decorative and industrial tough. Placement is cost effective and faster than hand trowel methods – and always looks the same from start to finish.

System Description: A Crown Polymers exclusive. The cove system is a precast polymer base molding available in both 4, 6, and 8-inch (100, 150 and 200 mm) heights, with pre-formed pieces that create inside and outside corners. When CrownCove™ is coated or overlaid with polymers, the finished cove provides a uniform, seamless, integral floor-to-wall juncture; producing the most sanitary and easily maintained floors available.



Escherichia coli Test Results.

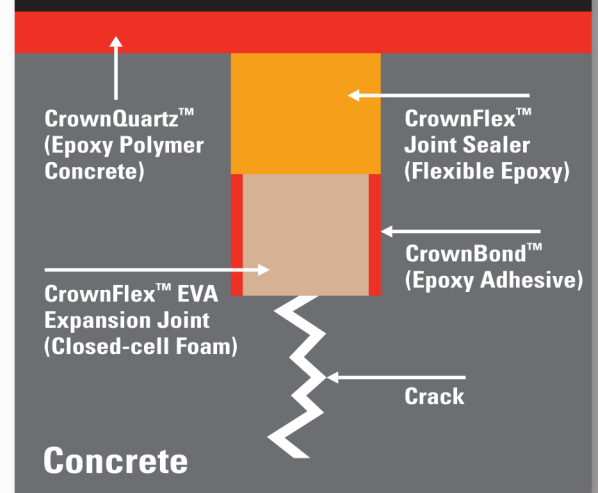
A. Control Sample E-Coli 24 hours no treatment.

B. CrownSilver™ E-Coli 24 hours 99.999% control.

Note: Staphylococcus aureus: Same results.

CrownFlex™ 500 MOVEABLE JOINT & CRACK REPAIR SYSTEM

Crack only develops in EPC when movement of 1/4" (6mm) or more occurs.



Concrete



www.agschicago.com

847-382-3567